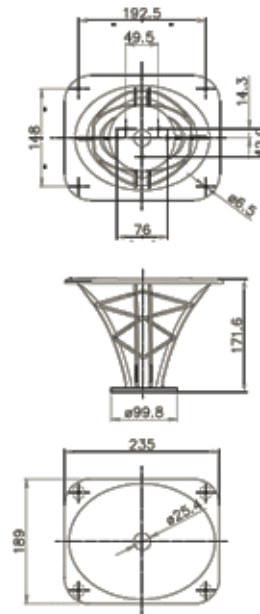




LTH102 HF Horns



NOMINAL SPECIFICATIONS

Throat Diameter	25.4 mm (1 in)
Frequency Range	0.8÷20 kHz
Recommened Crossover Frequency (1)	1 kHz
Horizontal Nominal Coverage (-6dB) (3)	60°
Vertical Nominal Coverage (-6dB) (3)	50°
Directivity Index (3) (4)	9.5 dB
Mouth Height	189 mm (7.44 in)
Mouth Width	235 mm (9.25 in)
Depth	171.6 mm (6.76 in)
Mouth Mounting Holes (4x)	6.5 mm (0.26 in)
Net Weight	1.2 Kg (2.65 lb)
Shipping Weight	1.45 Kg (3.20 in)
Shipping Box	207x268x185 mm (8.15x10.55x7.28 in)
Material	Al

ORDERING CODES

Ordering Code	TR390103
---------------	----------

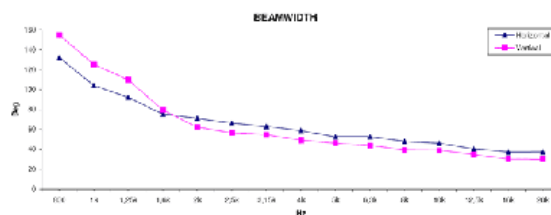
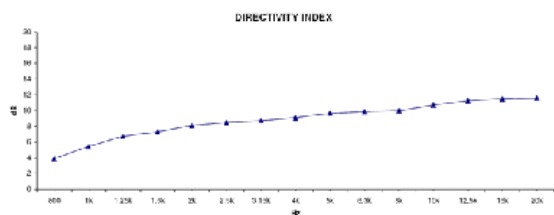
NOTES

(1) 4π sr acoustic loading

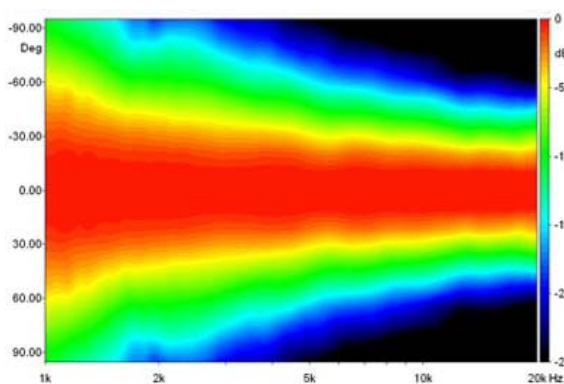
(3) Average value in frequency range: 1,6÷16 KHz

(4) Average values on horizontal and vertical planes

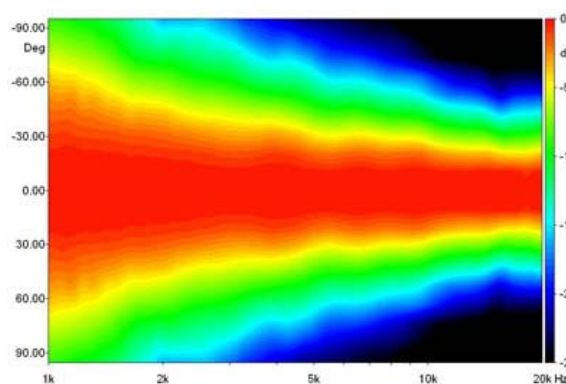
CURVES



BEAMWIDTH

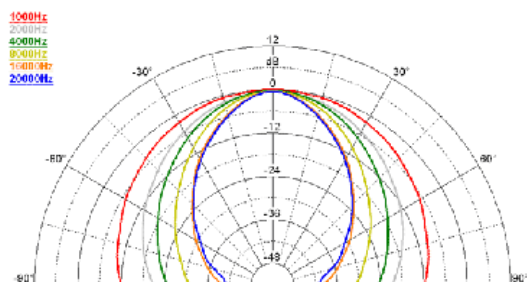


Horizontal Beamwidth

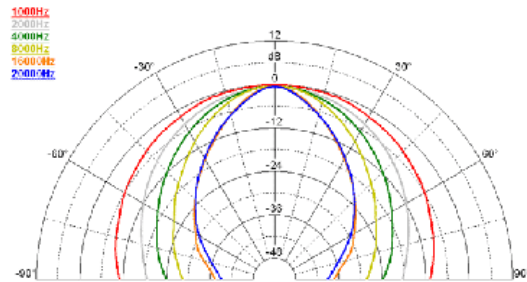


Vertical Beamwidth

POLAR PATTERN



Horizontal Polar Pattern



Vertical Polar Pattern